

INDUSTRIAL SPACE FOR LEASE

BELL WRIGHT BUSINESS PARK

BELL WRIGHT ROAD, ELLIANA &
CEMBER WAY
SUMMERVILLE, SC 29483

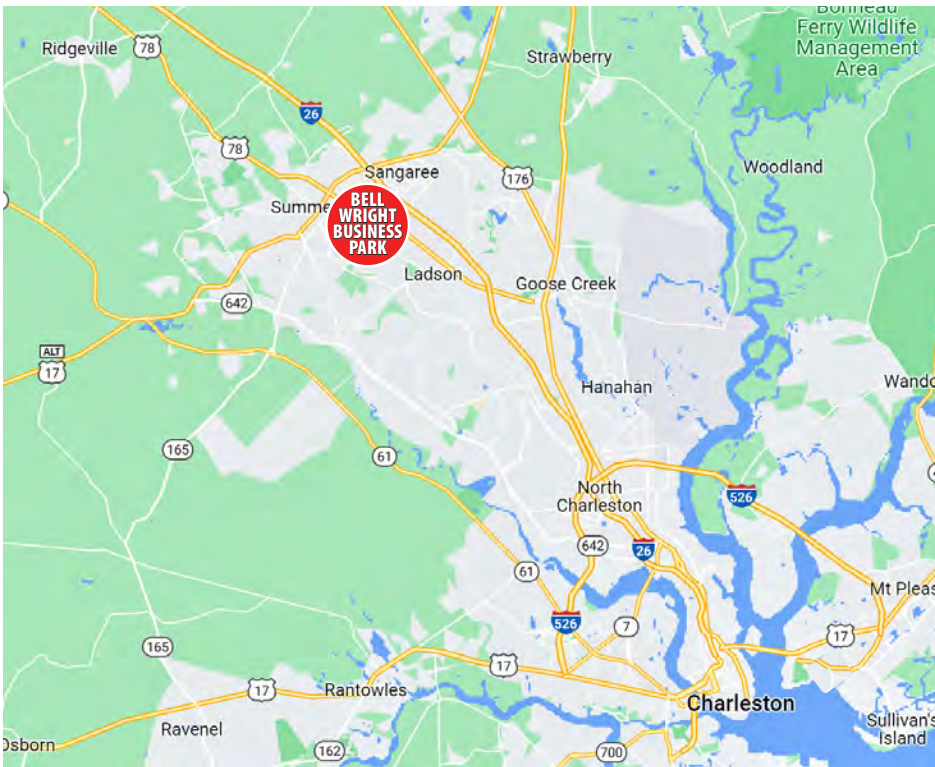
LAYDOWN YARD
ALSO AVAILABLE



Grace Moring

843.518.6808

gmoring@wrsrealty.com



OFFERING SUMMARY

THE PROPERTY

Address	Cember & Elliana Way, Bellwright Rd Summerville, SC 29483
Zoning	Light Industrial
County	Berkeley County
Municipality	Summerville
Lease Type	NNN
Available SF	217 Cember: Unit D - 6,017 SF 10162 Bellwright: Unit B - 3,146 SF 133 Elliana: Unit B-2 - 1,300 SF

Bell Wright Business Park is located just off of Highway 78 in Summerville, 4 miles South of Exit 199 on I-26. The industrial park is in close proximity to I-26 connecting it to The Charleston Port Terminals, The Charleston International Airport and local manufacturers, Mercedes, Boeing, Volvo and Bosch.

Current available spaces range from 2,642 SF to 6,017 SF. All units have drive in doors and office space. The buildings are surrounded by established businesses and offer excellent street front visibility within the industrial park. See individual floor plans for space specifications.

An additional 0.9 acre laydown yard is available on Cember Way for \$2,500/month, NNN.

LOCATION



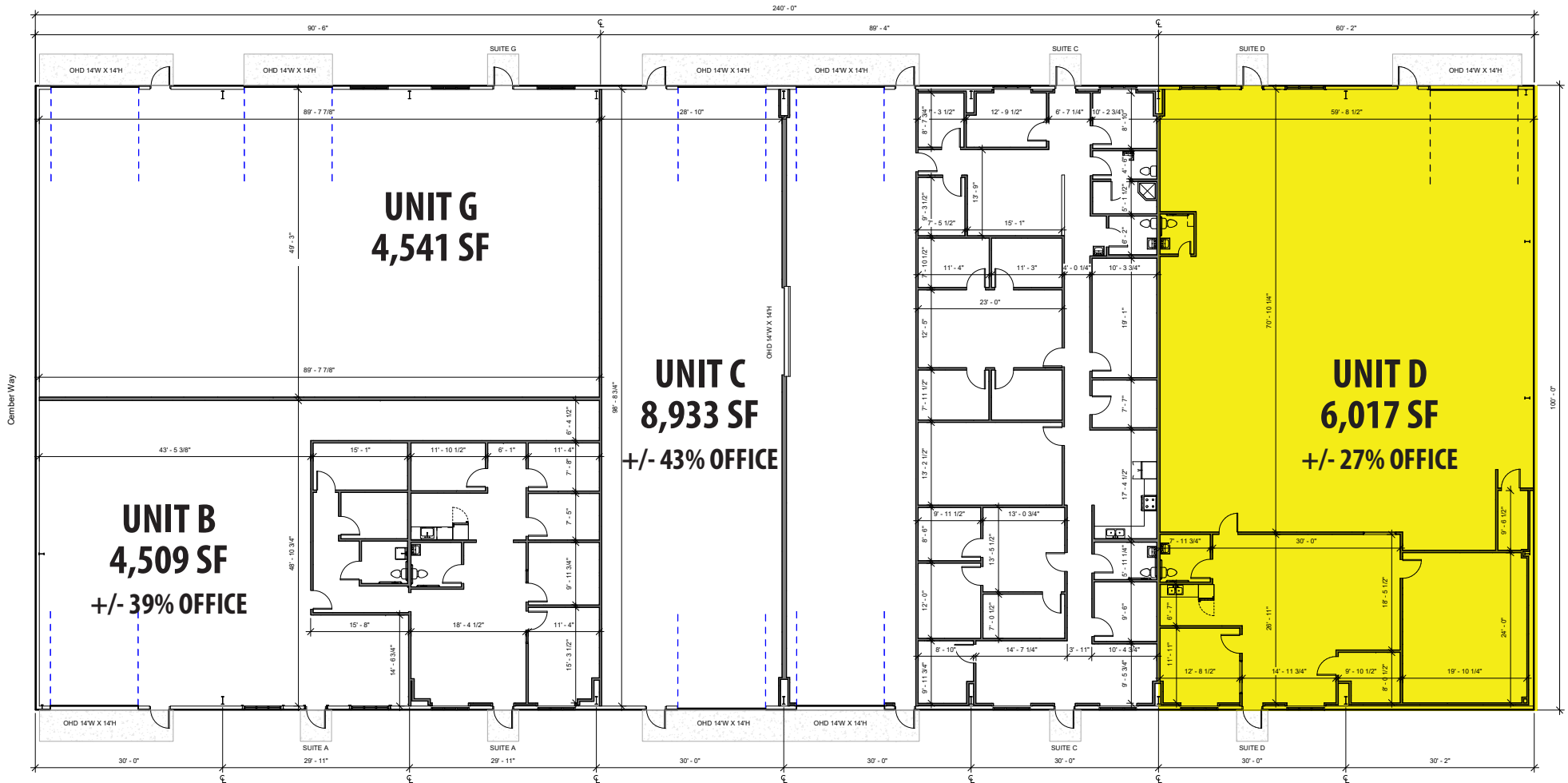
BELL WRIGHT BUSINESS PARK



CEMBER & ELLIANA WAY



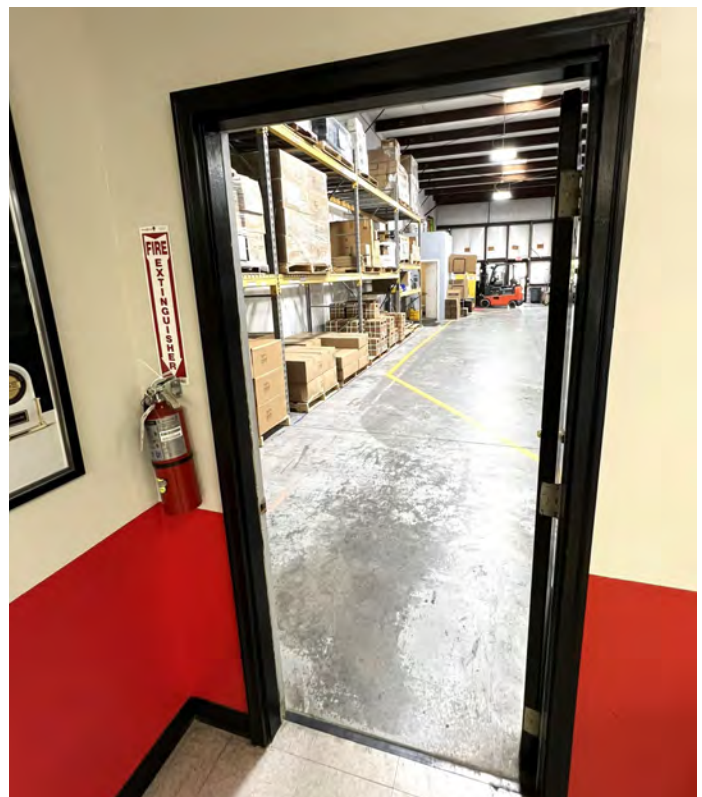
217 CEMBER WAY - UNIT D

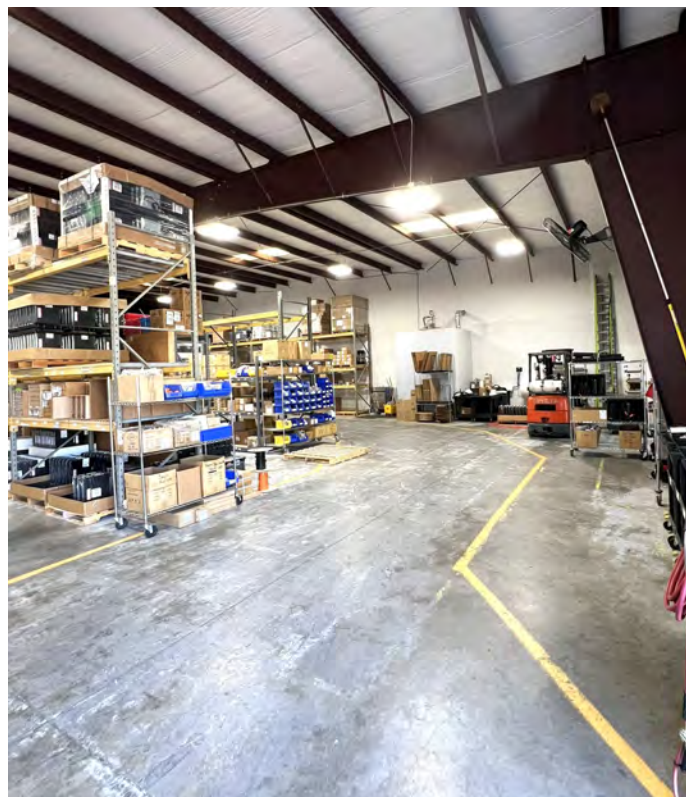
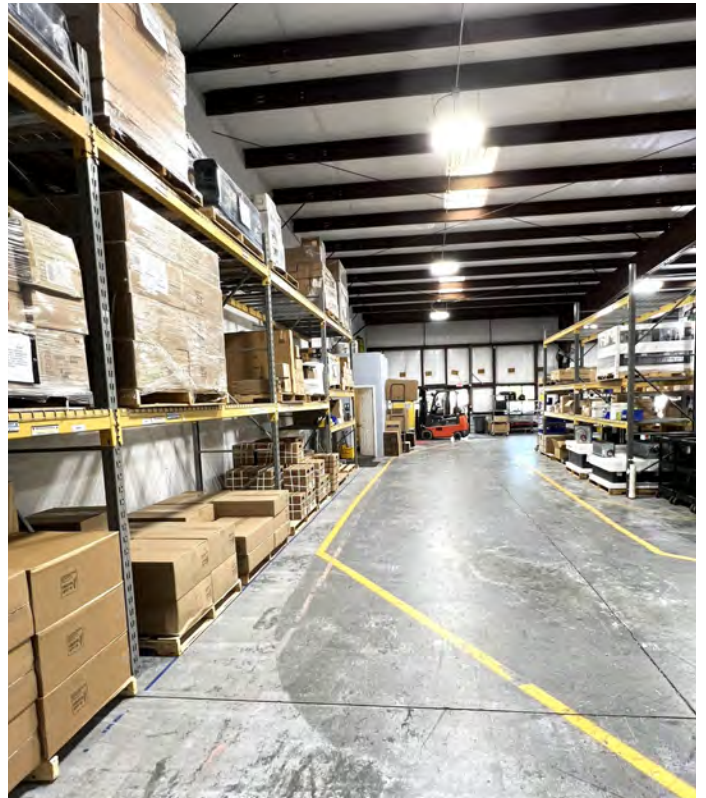


1 Floor Plan
1/8" = 1'-0"

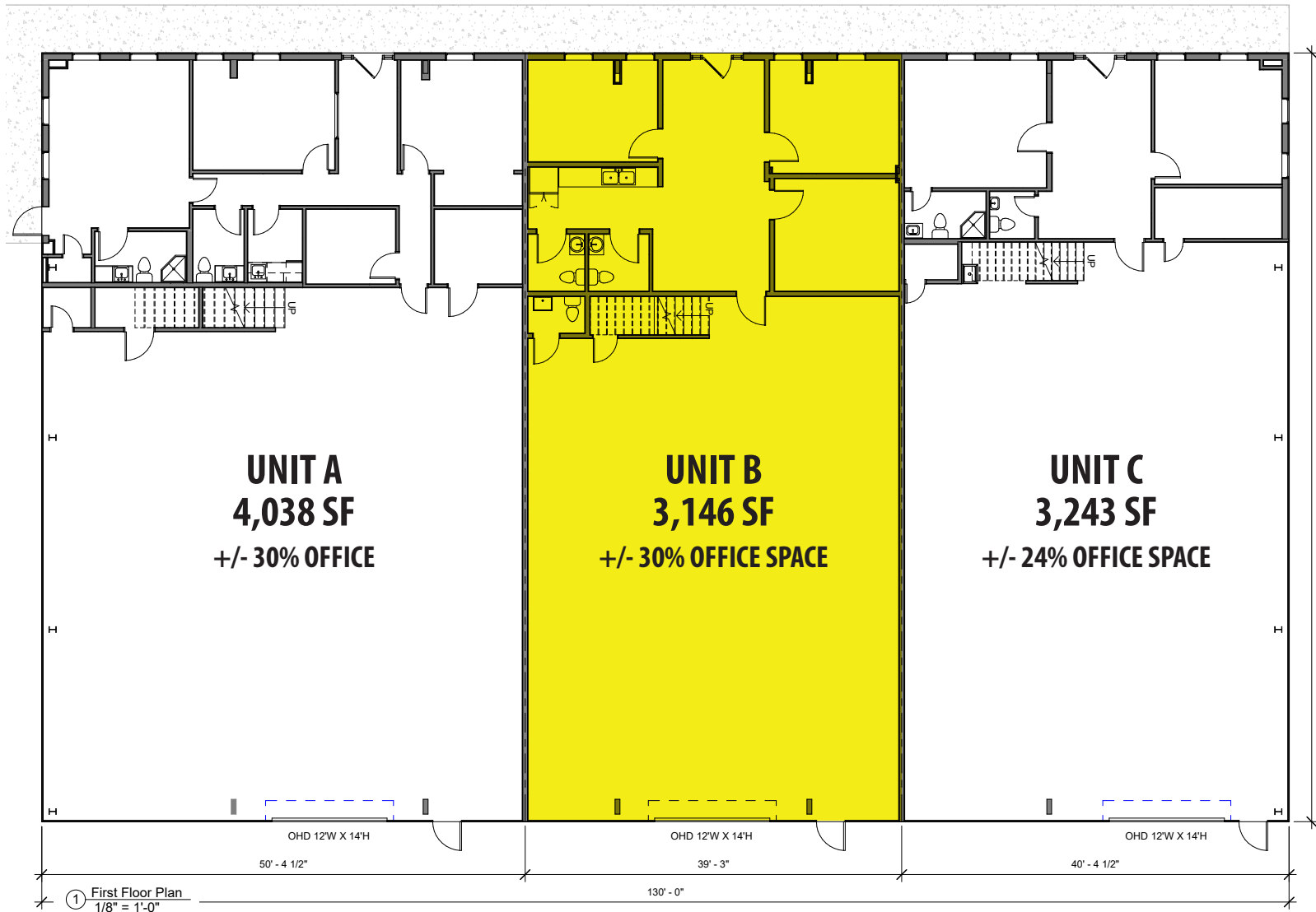
The information contained herein was obtained from sources believed reliable, however, WRS Inc. makes no guarantees, warranties, or representations as to the completeness or accuracy thereof. The presentation of this property is submitted subject to errors, omissions, change of tenants or conditions prior to sale or lease, or withdrawal without notice.
WRS Inc. | 410 Mill Street, Bldg. 1, Suite 200 | Mount Pleasant, SC 29464 | main 843.654.7888 | fax 843.654.7889

217 CEMBER PHOTOS



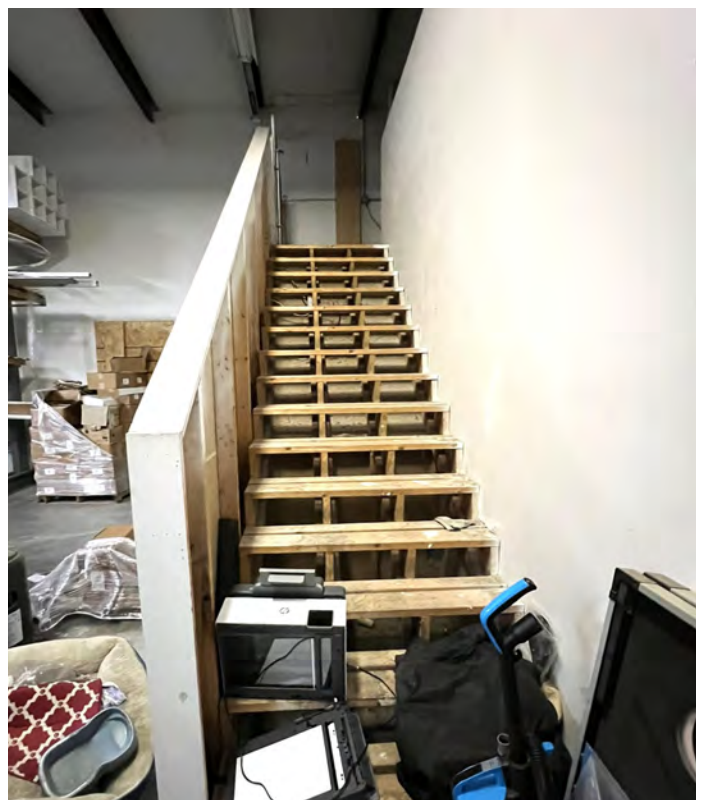
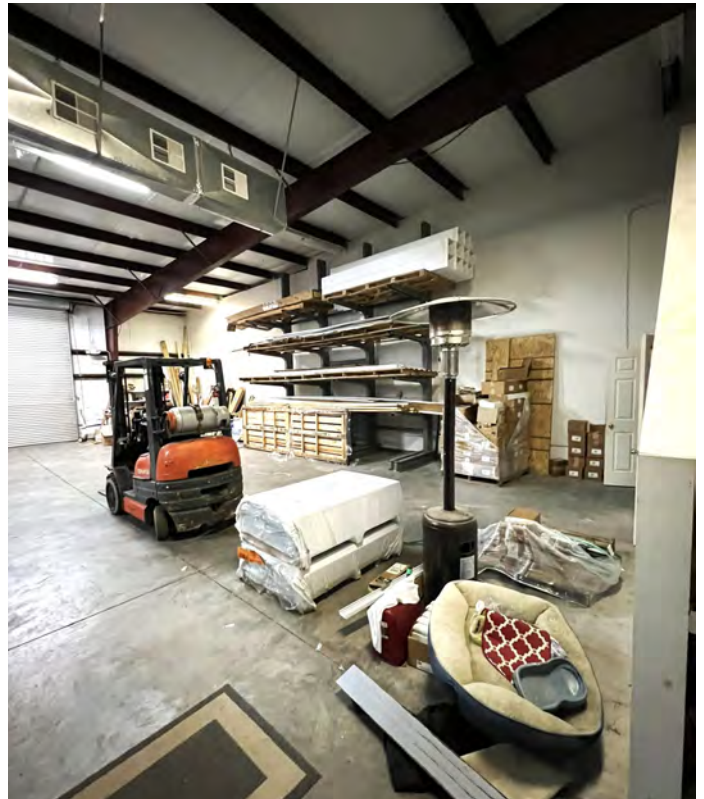


10162 BELL WRIGHT - UNIT B



The information contained herein was obtained from sources believed reliable, however, WRS Inc. makes no guarantees, warranties, or representations as to the completeness or accuracy thereof. The presentation of this property is submitted subject to errors, omissions, change of tenants or conditions prior to sale or lease, or withdrawal without notice.
WRS Inc. | 410 Mill Street, Bldg. 1, Suite 200 | Mount Pleasant, SC 29464 | main 843.654.7888 | fax 843.654.7889





CEMBER WAY - LAYDOWN YARD



The information contained herein was obtained from sources believed reliable, however, WRS Inc. makes no guarantees, warranties, or representations as to the completeness or accuracy thereof.

The presentation of this property is submitted subject to errors, omissions, change of tenants or conditions prior to sale or lease, or withdrawal without notice.

WRS Inc. | 410 Mill Street, Bldg. 1, Suite 200 | Mount Pleasant, SC 29464 | main 843.654.7888 | fax 843.654.7889

CEMBER WAY - LAYDOWN YARD





WRSINC
REAL ESTATE INVESTMENTS

410 Mill Street, Bldg. 1, Suite 200
Mount Pleasant, SC 29464
843.654.7888 Office
843.654.7889 Fax
www.wrsrealstate.com